

CERTIFICATE OF LOCATION OF GOVERNMENT CORNER

EAST QUARTER Corner of Section 33, Township 105N, Range 42W

5th Principal Meridian, State of Minnesota, County of Murray.

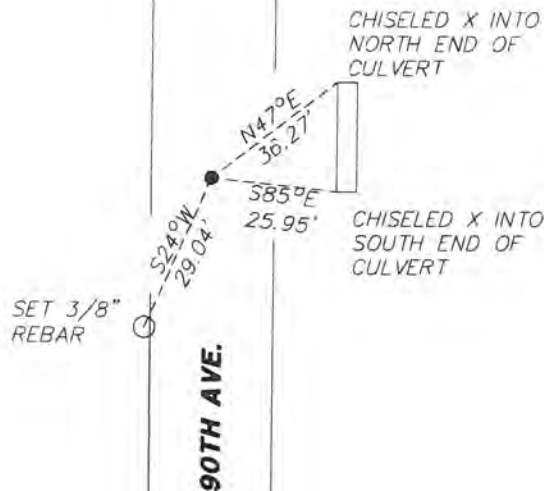
At the corner location shown on the sketch:

On 05/16/19 found a capped rebar stamped "Ulteig Eng. Inc." down 0.1'.
DATE

left monument as found lowered monument removed monument (explain)

On _____ placed a _____
DATE

SKETCH OF REFERENCE TIES



N.T.S.

Statement of evidence for this corner location is on back of this page.

I hereby certify that this document was researched and prepared by me or under my direct supervision and that I am a licensed Land Surveyor under the laws of the State of Minnesota.

Signature *K. W. ...*

Date 6/27/19 License No. 49563

Title:

- Land Surveyor Professional Engineer
 County Surveyor County Engineer

OFFICE OF THE COUNTY RECORDER

County of Murray

I hereby certify that this document was filed in the Co.

Recorder's office at 9:00 A.M. on the 8th day of July A.D. 20 19

County Recorder *Evelyn Larson*

by _____, Deputy

DOCUMENT NO. —

Statement of Evidence:

East Quarter corner of Section 33, Township 105 North, Range 42 West, 5th Principal Meridian, Murray County, Minnesota.

1902 Murray County, placed a stone West of grade. Measured 2640' to NW of section 34. Measured 2640' to the SW of Sec. 34.

2012 Murray County Highway Department, located a land surveyor's pin, 1" down and 1' East of centerline.

2019 Westwood Professional Services searched area and found a capped rebar stamped "Ulteig Eng. Inc. down 0.1'. Fits 0.6' West of a N/S road centerline, fits 11' South of a field line to the East. Fits within 3' of lost position. Coordinates match provided by Murray County. Set 3 ties. Holding rebar as best available evidence.

Analysis of the recovered data, field evidence and survey measurements, indicates that the monument found is the correct perpetuation of this corner. For additional information concerning this corner please contact Westwood Professional Services.